

## COLOR REPLACEMENT TOOL

The Color Replacement Tool provides you with a highly controllable way of modifying color in your images. You can paint over sampled pixels, altering them to specified values. You can adjust the size and hardness of the brush for optimal results. Here are the options this tool offer.

**Blending Modes.** When working with the Color Replacement Tool, you can choose from four different modes: Hue, Saturation, Color, and Luminosity. This allows you to change the color entirely or make more subtle changes. Each mode works the same as the blending modes found in the Layers Palette.

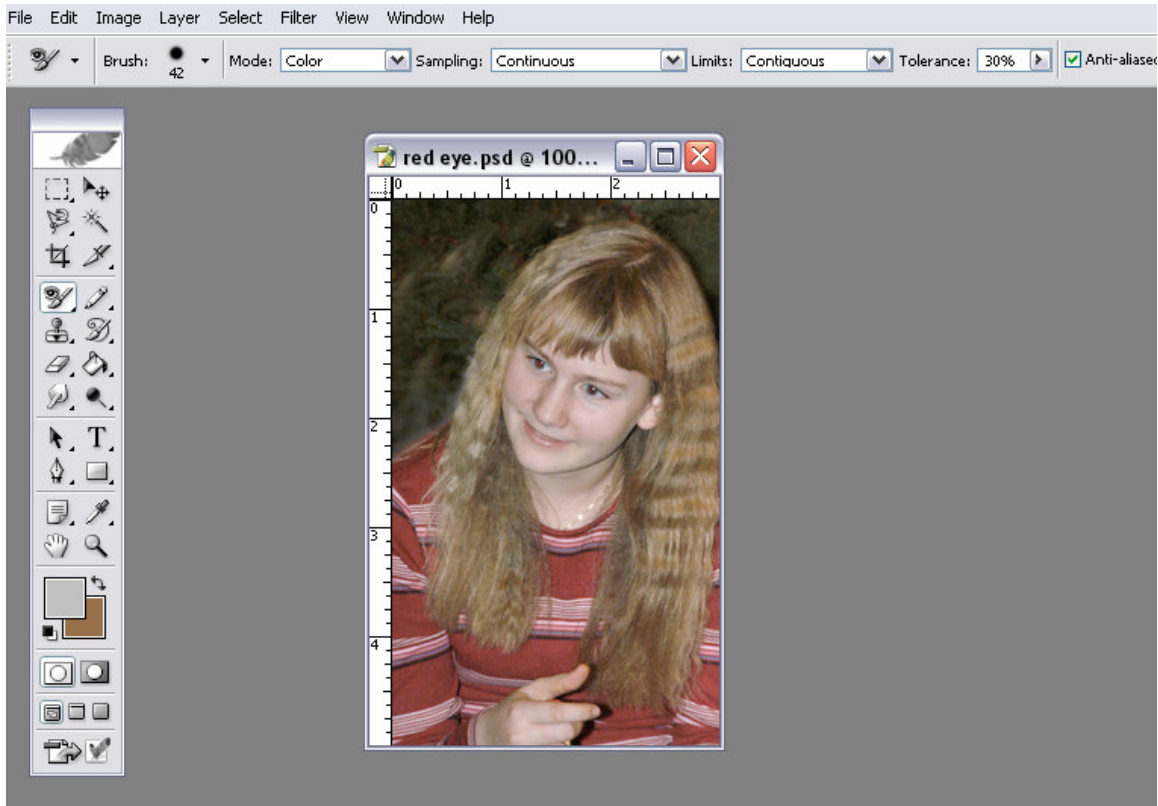
**Sampling:** You can choose how the selected brush samples the target color from the Sampling pop-up menu on the tool options bar. Your choices are Continuous, Once, and Background Swatch.

**Limits:** Besides choosing how to sample a target color, you can also set limits. Your Choices are Discontiguous, Contiguous, and Find Edges.

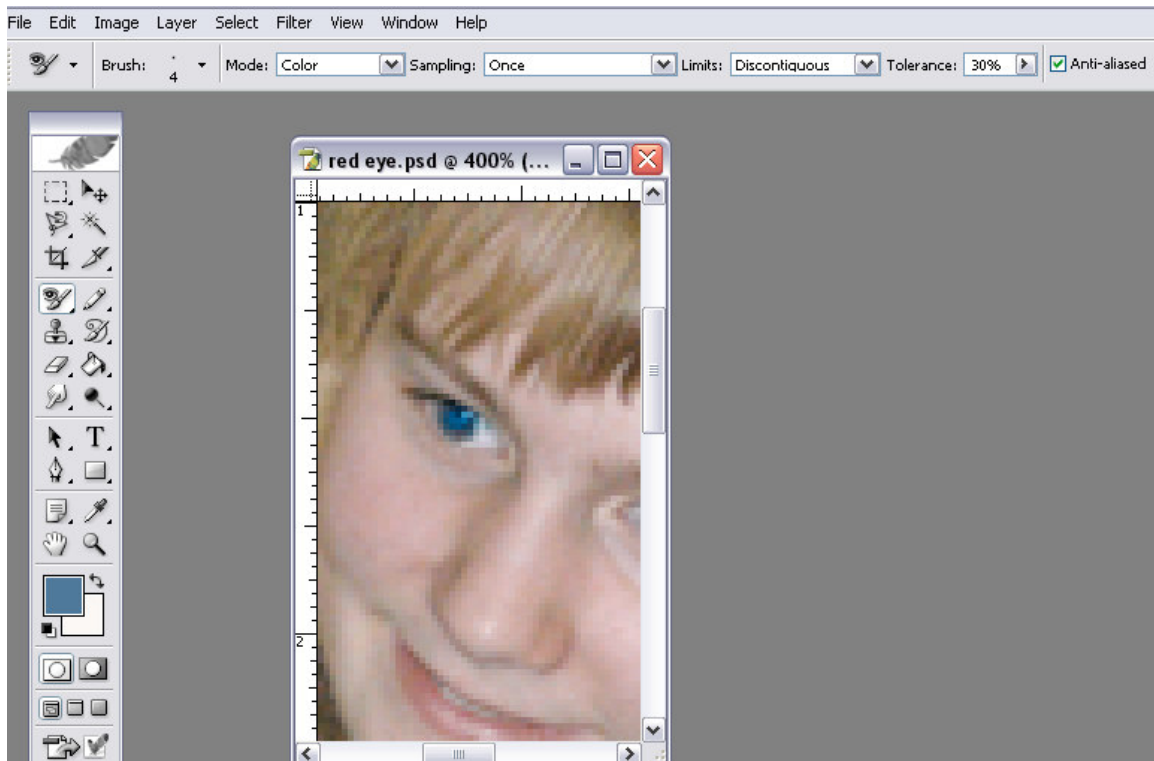
**Tolerance:** You can adjust the tolerance of the Color Replacement tool. A lower tolerance allows you more control by limiting the number of pixels that are altered. A higher tolerance enables you to replace a broader range of colors at once.

This is a great tool for eliminating red eye or changing eye color. First you should magnify the area you want to change so you can see it clearly. To do so click on the Zoom tool in the toolbox and drag your mouse pointer over the subjects eye to zoom in on the area. Next select the Color Replacement Tool. When the Color Replacement tool is selected, its options appear in the tool options bar as shown at the top of the screen.

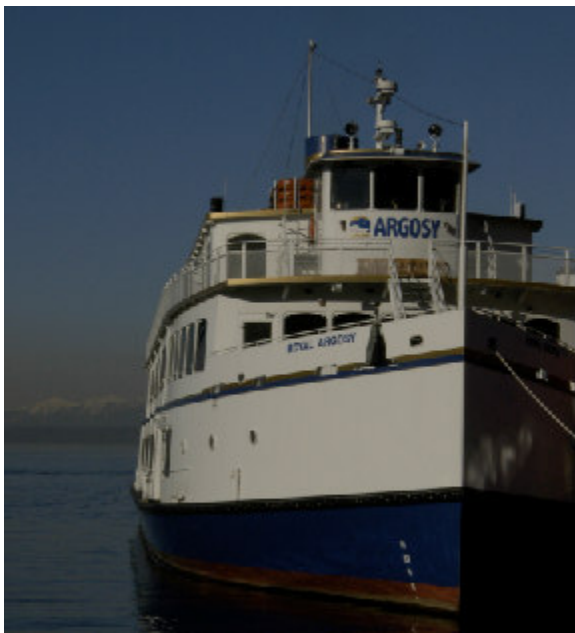
Click on the brush icon in the tool options bar and set your brush size so it is smaller than the area you want to change. Set the brush tip to 10 pixels in diameter. Set the hardness value at 50 % to create a mid-weight stroke. Then select Color from the Mode pop-up menu, once from the Sampling pop-up menu, and enter about 30% in the Tolerance text box. Finally, the Anti-aliased check box should be selected to create a soft edge.



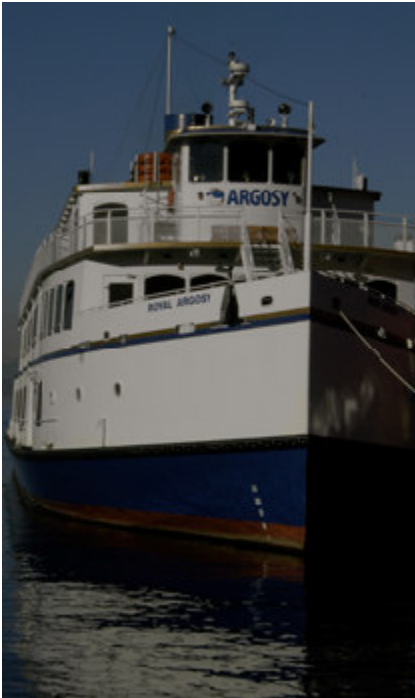
Click on the set Foreground Color swatch to open the Color Picker dialog box and specify a color for the eyes. I set the foreground color to black. If you are changing the eye color of a human, choose a shade of blue, green, or brown. Then click and drag your mouse pointer over the area you want to modify. Photoshop samples the color you first click on and replaces it with the foreground color you selected. Be careful not to let the crosshairs of your mouse pointer go past the actual eye area. Now most of the red is out, but there's still a tad left in the edge of the eye. This is because the tool settings told Photoshop that this lighter shade of red wasn't similar enough to be replaced. Now you can replace this small selection of the redish pixels with white, which makes the eye more realistic. To do so set your brush size to 1 pixel and set the foreground color to white. Then click and drag your mouse pointer over the few redish-colored pixels to complete the color change.



The Color Replacement tool is useful for more than just fixing red eye. You can also use it to replace large areas of color. In the example below the bow of the boat has a yellow cast.



In this photo I chose a bright white to paint over the boat. This is a great way to remove a colorcast from a photo.



The Color Replacement tool works wonders for removing a distracting color from the background of an image without affecting surrounding objects See example below

I find I use The Color Replacement tool often and in many circumstances. In the CS manual on page 151 there is a brief description of how to use the tool.

Genevieve Moyer  
8/25/04

