

## LINES AND BACKGROUNDS

There are many ways to apply lines to photographic images, creating wonderful effects and backgrounds. Here are three approaches that I feel work well. They are not original to me. Two came from Chuck Murphy, and one from an Elements 3 text.

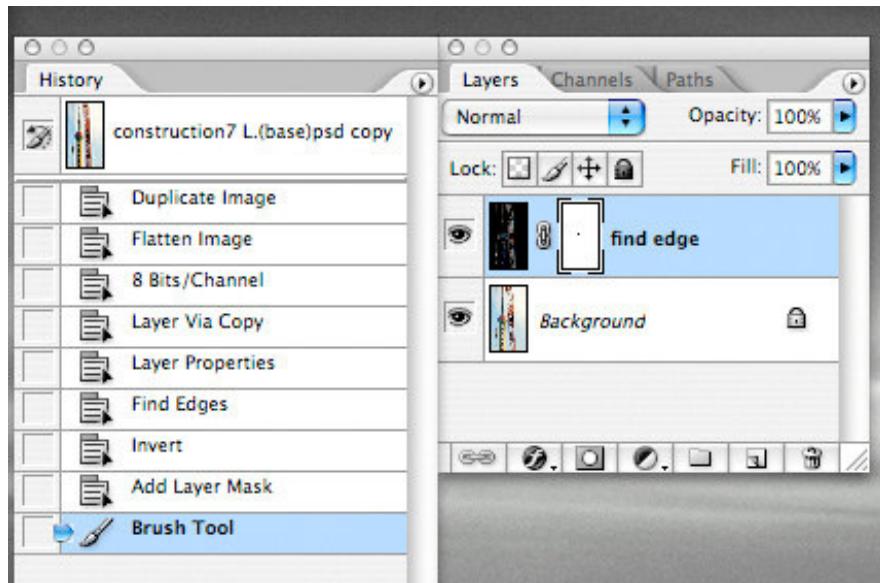
Norm Wooldridge 4/12/07

### Find Edge, Inverted

This application of one of many possible filters yields an interesting result. After going through a typical process to develop a good “normal” image, I duplicated it. (See Figure 1 below.) I flattened the layers in the duplicate. The original image was in 16 bits, which, incidentally gives much better results than 8 bit. However, the filter I wanted to use does not work in 16 bits, so I converted with Image > Mode > 8 bits. I then made a layer via copy with Layer > New > Layer Via Copy. I activated the layer by clicking on it and re-labeled it as Find Edge. Next I went to Filter > Stylize > Find Edges. The image can be left here, but I like it better inverted with Image > Adjustments > Invert to get a more dramatic black background. I added a layer mask by clicking on the add layer mask symbol at the bottom of the layers palette. This adds a new rectangle to the right of the thumbnail icon. I activated that by clicking on the rectangle.

The image I will demonstrate this technique has three vertical sections. I choose to remove the above changes from the center section, revealing it in its natural state. Making sure that the Foreground box (upper box) is black, I selected a brush and brushed away the information on the layer mask, over the center section only. I hope you like it as much as I do.

**Figure 1. Finding Edge Sequence**



### Pen and Ink

I took this picture of the underside of many balloons hawked by a vendor in China. Again, I processed it in a “normal” way to make it the best I could. I then followed a process I learned from a text on Photoshop Elements 3. Our lesson focuses on lines, so that is what I will illustrate in the class. In a way, however, the best part of the Elements lesson is the application of a dry brush filter to get a painterly effect. I like that effect, and have used it several times with other

competition images. Therefore, I will outline the process for you below, prior to covering the lines portion.

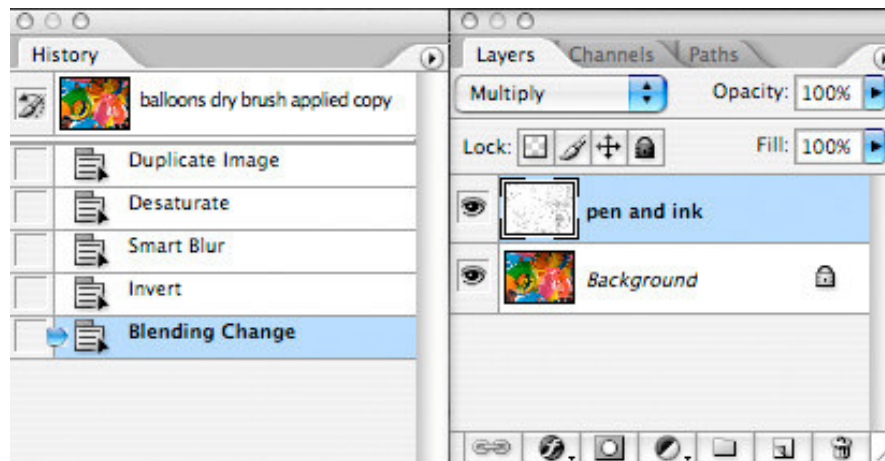
I made a duplicate layer via Layer > Duplicate and labeled it Pen and Ink. I activated the background and turned off the pen and ink layer visibility by clicking the eye icon. Next, to accommodate the filter I need, I went to Image > Artistic > Dry Brush. This is a slow process, so be patient. I chose a brush size of 5, Detail of 8, Texture of 1. Next I chose Filter > Blur > Smart Blur and selected Radius 10, Threshold 50, Quality High and Mode Normal. Again be patient... Slow.

So, here is the lines lesson. I made the Pen and Ink layer active and turned the visibility back on. Turned the layer to black and white via Image > Adjust > Desaturate. I then went to Filter > Blur > Smart Blur, choosing Radius 25, Threshold 35, Quality High, and Mode Edge Only. Patience! I then chose Image > Adjust > Invert to get black lines on a white background. In the layers pallet, I clicked on the blend mode and chose Multiply, keeping the opacity at 100%. See figure 2.

I converted the image back to 16 bits in order to better preserve the integrity of the image. Image > Mode > 16 bits. I then went to Layer > Curves and gave the image a lighter shade. I activated the Background and went to Layers > New Adjustments > Hue/Sat. Set yellow saturation at +38, green at +21, and red at +30.

I think it is pretty exciting to view.

**Figure 2. Balloons with Lines**



## Lines Only

Again, I flattened the basic image and changed to 8 bits in order to apply the filter. Then, Layer > New > Layer via copy. I labeled it Lines. I then went to Filter > Blur and Smart Blur. I used a Radius of 10 and a Threshold of 60. I put the Quality on high and clicked on Edge Only. I opened it and patiently waited while the high memory need proceeded. To obtain a white background, I went to Image > Adjust > Invert. I then went to

Filter > Blur > Gaussian Blur. I then went to Image > Adjust > Threshold, and ran the slider to 210.

The resulting image, made up of black lines, can be used in several ways. By putting a layer mask, I could brush out one of the vertical segments and reveal the original image underneath. I think, however, that I may put the above lines on a new layer and run it under the original image to create a sort of shadow effect.